



Whare Hākinakina Lincoln University Gym and Lincoln Community Care Association win award for seniors exercise programme

A 27-year partnership between Whare Hākinakina (Lincoln University Gym) and the Lincoln Community Care Association has won the inaugural Community Partnership Award at the New Zealand Tertiary Recreation Awards evening on 1 December 2023.

The award has recognised the partnership for providing exercise classes for adults aged 60 years and over who live in the community.

Offered since 1996, the 60+ programme provides three exercise classes per week, on Mondays, Thursdays and Fridays at 10am.

The thrice-weekly sessions aim to enhance physical health, focusing on balance, strength and cardiovascular fitness, while also fostering social interaction for seniors.

Whare Hākinakina manager Peter Magson says the objective of the senior classes is to provide safe exercise opportunities for senior adults, under the instruction of a qualified personal trainer.

NZ Tertiary Recreation Awards *The New Zealand Tertiary Recreation Awards are presented at the conclusion of the annual University and Tertiary Sport New Zealand (UTSNZ) conference, which is hosted by a different university each year. In 2023, the UTSNZ conference was hosted by Lincoln University.*

Whare Hākinakina LU Gym *Supporting Selwyn community since 1979. Whare Hākinakina is the biggest gym in Selwyn, with brand new facilities and equipment available. Offering world-class Les Mills programmes with more than 40 group exercise classes per week. We offer a range of different membership options with no contracts and no joining fee. For more information visit the Whare Hākinakina website at www.lincoln.ac.nz/lugym*

Lincoln Community Care Association *Find out about more services the Association offers on page 10 of this newsletter, or visit their website at www.lincolncomcare.co.nz*

“We want our senior adults to have fun while they are improving their physical health, especially in the areas of balance, strength and cardiovascular fitness.

“We also believe the social interaction, which usually includes mixing and mingling over morning tea after the class, is vitally important for our seniors – especially if they live alone.”

The Whare Hākinakina team regularly measure and assess the hand/eye coordination and balance capability of the seniors who participate in the classes.

The Lincoln Community Care Association sees the partnership with Whare Hākinakina as an important part of the overall health and wellbeing of the Lincoln community.

The Association encourages all seniors new to the area to head along to a senior class at Whare Hākinakina on any of the days mentioned for a free trial. Once signed up, Lincoln Community members pay a very reasonable fee to attend their senior exercise classes.



MEMBERSHIPS FOR EVERYONE

Our popular membership options are now available online and are very affordable from only \$12, \$14 or \$16 a week with no sign up fee and no cancellation fee

- Community Life Fit 65+
- Emergency Services
- Alumni Lincoln University
- Lincoln University Staff
- Secondary School
- Lincoln University Student
- Lincoln University Hall Student
- Squash
- Concession Card

Lincoln University Gym has been supporting the local community since 1979

WHARE HĀKINAKINA LINCOLN UNIVERSITY GYM *Moving more people, more often*

editorial info.

Lincoln Community News is the official newsletter of the Lincoln Community and Residents' Association Incorporated. It is produced by The Selwyn Printing Company and comes out monthly, with the exception of January.

We're seeking stories!

Do you have a story to share? We are always looking for news and information about what is happening in Lincoln and the Selwyn District. We'd like to hear the stories of residents' achievements, exciting happenings, community developments and more! This is a community newsletter and we welcome your voice.

Deadline is 20th of month preceding publication month. Text should be supplied as a non-formatted Word or Text document. Please supply any images as high resolution JPEG files. Adverts should be supplied as print ready, high resolution PDF files.

TO SUBMIT ARTICLES, STORIES OR ADVERTISING, PLEASE EMAIL: LCN@selwynprint.co.nz

If you would like an extra copy of this newsletter, please visit The Selwyn Printing Company, 13 Gerald Street, Lincoln.



Views expressed within this newsletter are not necessarily those of the publisher.

Kerbside collections standardised

From 1 February, kerbside practices nationwide will be standardised. That means most Kiwis will now be able to recycle the same things from home. These changes are part of the Government's move to standardise household kerbside collections across Aotearoa New Zealand, led by the Ministry for the Environment.

The Council's Resource Recovery and Waste Manager, Andrew Boyd said these changes are designed to make recycling easier for everyone.

"In Selwyn we are already recycling in line with most of these new requirements so for our residents this means there isn't a lot of change".

What is changing for our district, is you can no longer place cardboard or paper, including pizza boxes into your household green organics bin. These go in your yellow recycling bin. Pizza boxes need to be empty – free of food and sauce. Oil stains are fine.

The exception to this, is that you can still use newspaper to line the bottom of your organics bin, or supermarket paper bags, that you might use to line your food scraps bin inside.

Aerosol cans must now also go in your red bin.

Remember that the Pines Resource Recovery Park does accept a wider range of recyclable items that may not be able to be accepted in your kerbside recycling bins. To find out more about what Pines Resource Recovery Park accepts please visit selwyn.govt.nz/pines

For more information on all kerbside recycling changes, and for a full list of details of what can go into your bins, please visit selwyn.govt.nz/kerbsidechanges

– Selwyn District Council

TRAVEL SAFE TO YOUR SPECIAL OCCASIONS

BOOK A#1 SHUTTLE FOR

Pre/Post Events & Functions
Staff/Friends Outings in the CBD
Race Day Drop Offs
Concerts, Festivals, Sports
Weddings & Reunions
Birthday Gatherings

TO BE SAFE SO YOU CAN ALL HAVE A GOOD TIME!

REQUEST VIA THE A#1 WEBSITE & CLICK ON THE 'RUGBY & EVENTS' TAB

(Minimum 6 & Maximum 10)

FAMILY/GROUP TRANSFERS → AIRPORT/TRAIN/EVENT

Only 1 or 2 passengers? Or a group?
Early or late? Extra luggage?



😊 NOT A PROBLEM! 😊

Go to www.a1shuttle.co.nz

A#1SHUTTLE4U?

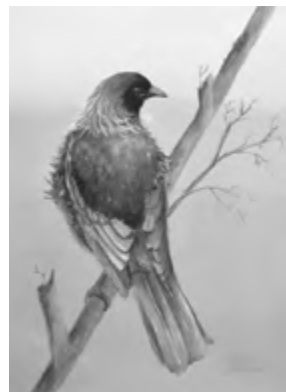


Down by the Liffey Gallery
Lincoln's Community Art Gallery, 1 James Street, Lincoln

Fresh

Therese Boustead + Jo Bryne + Tricia Hewlett

Therese, Joanne, and Tricia each freshly respond to nature's narrative, focusing on flora, fauna, and form



Open to Public:
Wed - Thur 11.30am - 2.30pm
Fri - Sun 10am - 4pm



Jan 24 - Feb 18

liffeygallery1@gmail.com
www.downbytheliffeygallery.com

Young people learn leadership skills

There are several Rotary programmes to assist young people in enhancing their knowledge and skills, together with an appreciation of the value of service.

One of these is called the Rotary Youth Leadership Award (RYLA), which aims at developing leadership skills among young adults. It comprises a five day live-in course including lectures, seminars, discussions, physical activities and interactions offered to young women and men between the ages of 18 and 25 who have the

potential to make a difference within their communities. Currently, Lincoln Rotary Club is co-ordinating this programme throughout the northern part of the South Island.

RYLA 2024 was an amazing event with a mix of speakers, activities and physical challenges held from 14 to 18 January. There were 39 participants with seven from Selwyn. The experience gained from running six previous RYLA programmes seemed to contribute to making this extra special. Gary Kennett, the chair of the organising committee believes: "Whilst the participants are all strangers on the first day, they quickly become a highly supportive, tight group willing to learn and grow. No doubt some lasting friendships have been formed."

More information about RYLA is found on the Facebook page: www.facebook.com/RYLAAUpperSouthIsland

There are other Rotary programmes for youth and detailed information about them can be found on the web page: rotarydistrict9999.org/page/rotary-youth-programmes or by contacting a local Rotary club.



Participants enjoy a day out with high ropes as one of the activities.

Rotary is an international not-for-profit organisation which provides humanitarian service, encourages high ethical standards in all vocations, and helps build goodwill and peace in the world. Approximately 1.2 million Rotarians belong to more than 36,000 Rotary clubs in more than 220 countries worldwide. If interested in Lincoln Rotary activities, email secretary.lincolnrotary@gmail.com

Lincoln based and working for you in your **community**



THINKING OF SELLING?

NOW IS A GREAT TIME TO SELL!

Tracy Stevenson
Residential & Lifestyle Sales
Mobile **027 543 9029**
DDI **03 343 9497**
tracy@glassmiles.co.nz

Working for you 23/7
- a girl's gotta sleep

FOLLOW ME ON FACEBOOK



GlassMiles REAL ESTATE

Our experience is your **advantage**
Licensed REAA 2008



We're back at school

Please watch out for us

Sitting pretty in the courtyard of The Laboratory, the Apollo Cinema continues to bring great films to our community. Enjoy our boutique cinema without the extra effort of having to go into the city, even grab yourself a beverage or some of your favourite Lab food to take in with you.

Don't forget you can hire our wee cinema, all 15 seats, and have the place all to yourselves! With prices starting from only \$165 this could be your best girls night, boys night, date night or fun night yet! You can choose from one of our latest releases or bring your own on DVD or Blu-Ray. Whatever the occasion we have you sorted at The Apollo & The Laboratory!

Here's the new release films we have for you this month...

The Old Oak *Drama (M)*

The Old Oak is a special place. Not only is it the last pub standing, but it's also the only remaining public space where people can meet in a once thriving mining community that has fallen on hard times after 30 years of decline. People feel deserted by the system and there is growing anger, resentment, and a lack of hope. TJ Ballantyne (Dave Turner) the landlord hangs on to The Old Oak by his fingertips, and his predicament is endangered even more when the pub becomes contested territory after the arrival of Syrian refugees who are placed in the village without any notice. In an unlikely friendship TJ meets a curious young Syrian named Yara (Ebla Mari) with her camera. Can they find a way for the two communities to understand each other? So unfolds a deeply moving drama about their fragilities and hopes.

Directed by Ken Loach who has announced this is his last feature film. Imbued with the fiercely humanistic spirit that has defined his filmography, *The Old Oak* serves as a fitting, albeit somewhat sentimental, finale to a remarkable career.

The Colour Purple *Kids & Family*

This bold new take on the beloved classic is directed by Blitz Bazawule (*Black Is King*, and *The Burial of Kojó*) and produced by Oprah Winfrey, Steven Spielberg, Scott Sanders and Quincy Jones. A story of love and resilience, a decades-spanning tale of one woman's journey to independence. Celie (Fantasia Barrino) faces many hardships in her life, but ultimately finds extraordinary strength and hope in the unbreakable bonds of sisterhood. Much more than a remake, this version of *The Colour Purple* stands on its own as a vibrant, uplifting experience, and the singing and dancing are superb.

Argyle *Action / Comedy (M)*

The greater the spy, the bigger the lie. Elly Conway (Bryce Dallas Howard from the *Jurassic World* franchise) is the introverted reclusive author of a series of best-selling espionage novels, whose idea of bliss is a night at home with her computer and her cat, Alfie. But when the plots of Elly's fictional books, which centre on secret agent Argyle and his mission to unravel a global spy syndicate, begin to mirror the covert actions of a real-life spy organisation, quiet evenings at home become a thing of the past.

Accompanied by Aidan (Oscar® winner Sam Rockwell), a cat-allergic spy, Elly (carrying Alfie in her backpack) races across the world to stay one step ahead of the killers as the line between Elly's fictional world and her real one begins to blur.

A razor-witted, reality-bending, globe-encircling spy thriller starring a cat in a backpack – what more can we say?!

Force of Nature: The Dry 2 *Drama (M)* *From 8 February*

If you loved *The Dry* you will love this second entry in the Aaron Falk series. After receiving a distressing call from an informant, Federal Agents Aaron Falk (Eric Bana) and Carmen Cooper (Jacqueline McKenzie) head deep into the Giralang Ranges to investigate the whereabouts of their corporate whistle-blower Alice (Anna Torv) after she mysteriously disappears on a company hiking retreat. The four women who were recovered from the bush each seem to be hiding something about their traumatic experience. As Falk and Cooper close in on the case, they uncover worrying details about the connections between these women and begin to fear for the safety of their missing informant as a storm threatens to halt the search.

A gripping, surprising, edge-of-your-seat detective mystery – another Australian classic.

Bob Marley: One Love *Biography (M)* *From 14 February*

A celebration of the life and music of the legendary icon who inspired generations through his message of love and unity. On the big screen for the first time, discover Bob's powerful story of overcoming adversity and the journey behind his revolutionary music. Produced in partnership with the Marley family and starring Kingsley Ben-Adir as the legendary musician and Lashana Lynch as his wife Rita.

Priscilla *Drama (M)*

From 22 February

Oscar winner Sofia Coppola writes and directs this biopic on Priscilla Presley, based on her own novel and played by Cailee Spaeny (*Mare of Easttown*) and co-starring Jacob Elordi (*Saltburn*) as Elvis.

When teenage Priscilla Beaulieu meets Elvis Presley at a party, the man who is already a meteoric rock-and-roll superstar becomes someone entirely unexpected in private moments: a thrilling crush, an ally in loneliness, a vulnerable best friend. Through Priscilla's eyes, Sofia Coppola tells the unseen side of a great American myth in Elvis and Priscilla's long courtship and turbulent marriage, from a German army base to his dream-world estate at Graceland, in this deeply felt and ravishingly detailed portrait of love, fantasy, and fame.

The best way to find the perfect film for you is to watch the trailers by visiting our website, where you can also buy tickets and gift vouchers online. Enjoy the films, and feel free to let us know of any requests you have!

apollo.thelaboratory.co.nz goodparties@thelaboratory.co.nz

What's on at The Laboratory

We are pleased to report our Sunday music sessions are continuing for the foreseeable future, and are very excited to be hosting our second ever Pets Day!

Sun 4 Feb	Sunday Music Session 3–5pm: Bradley & Chloe
Tue 6 Feb	Closed for Waitangi Day
Sun 11 Feb	Sunday Music Session 3–5pm: Sarah Newman
Sun 18 Feb	Sunday Music Session 3–5pm: Anna & Damo
Sun 25 Feb	Sunday Music Session 3–5pm: Performer TBC
Sun 3 Mar	Pets & Family day! Look out for more info coming soon.

lincoln senior citizens



In early December we had our Christmas lunch in the Lincoln Bowling Club hall. Our thanks to Selwyn Lions catering team, Doug Corbet for the music, and New World Lincoln for their donation, all contributing to make this a special event for the Lincoln Senior Citizens members.



Upcoming Events:

Tuesday 6th February – Mystery bus trip with lunch at the Crate & Barrel, Leeston.

Tuesday 5th March – AGM with afternoon tea, recycling sales table and raffle.

New members welcome.

For information about Lincoln Senior Citizens, contact: Evelyn Ph: 027 712 7195 or Gloria Ph: 027 434 6554.

Trusted advice to get the right price

Get in the *know* with
Eddie & Jolene Eagar

Franchise Owners



REAL ESTATE

Mike Pero



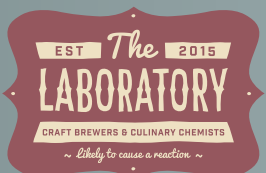
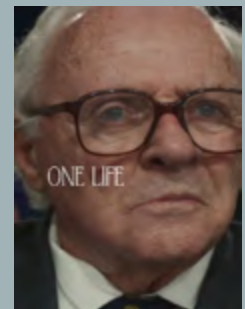
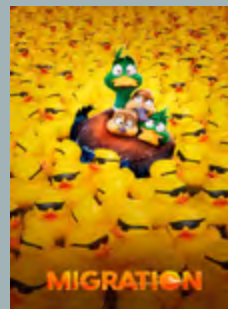
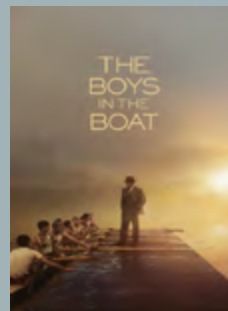
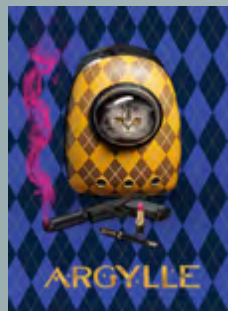
Rolleston | West Melton
Lincoln | Prebbleton

0800 EAGARS

Mike Pero Real Estate Ltd. Licensed REAA (2008)

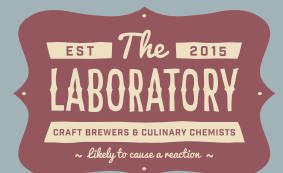
APOLLO CINEMA

February Screenings



*Open 11am til late
Tuesday to Sunday*

15 seat movie theatre
Private hire by arrangement
goodparties@thelaboratory.co.nz
apollo.thelaboratory.co.nz



Lincoln University Research Technician awarded prestigious agriculture industry honour

Lincoln University Research Technician for the Faculty of Agriculture and Life Sciences, Malcolm Smith, has been awarded the 75th Jubilee Technician Award by the New Zealand Society of Animal Production (NZSAP).

The highly prestigious honour, which was established in 2015 in recognition of NZSAP's 75th anniversary and has only been awarded twice in its history, acknowledges an outstanding contribution by a technician to the facilitation of quality research in New Zealand animal production.

Malcolm Smith has been a technician working on New Zealand pastoral systems for over 50 years, which is itself a noteworthy achievement, but it is his excellent work and dedication throughout his career that has truly set him apart in his chosen field.

First job

Malcolm's first job out of high school was assistant technician at then-Lincoln College in 1972, during which time he studied for the New Zealand Certificate of Science at Christchurch Technical Institute, majoring in Biology and Biochemistry.

For the next four years he worked on beef trials, both on the Lincoln College Research Farm and Ashley Dene. He was responsible for the day-to-day management of the experiments, including nutritional trials on weaners that involved daily shifts compared with weekly.

This also involved the winter nutrition of beef breeding cows fed a sole diet of barley straw. Perhaps the most fun he had was measuring the milk production of these beef cows.

Next career move

Malcolm left Lincoln College in 1976 to work at MAF/MAFTech/AgResearch as technician at Templeton, Winchmore and Lincoln until 2000. During this time he continued his work with beef cattle, including managing a 300-cow herd as part of the Beef Breed Evaluation for the Genetics section of Ruakura.

This was a big step-up for Malcolm. He became proficient at cow artificial insemination and pregnancy diagnosis during this period and continued work on beef weaners. His work then turned to sheep, including an involvement with the first commercial sheep milking flock at Templeton, where he also designed an artificial rearing system for lambs.

His focus was then shifted to sheep genetics and he managed a flock of 1500 ewes in a selection trial, also for the Genetics section at Ruakura, during a period when wool was the focus of selection and breeding. He took the opportunity to complete his wool classing certificate at Lincoln College during this period, which he gained with Distinction.

In addition to the focus on wool, Malcolm was also responsible for managing flocks breeding for resistance to internal parasites

and indoor feeding trials on staple length of wool which he presented to NZSAP – one of nine papers he co-authored for NZSAP up until 2000.

Joining Dryland Pastures Research Group

In 2001 Malcolm joined the Dryland Pastures Research Group at Lincoln University, where he has been solely responsible for the farmlet trials run by this group, and the supervision of field work undertaken by numerous postgraduate students.

His work has contributed significantly to the improved management of east coast dryland farming in New Zealand, helping to transform farms from Central Otago to Hawkes Bay.

Hill Country Futures Programme

Malcolm has also been central to the recently completed Hill Country Futures Programme. This latest research continued a central theme for Malcolm's work, which has involved maintaining intensive field research plots at Lincoln, including one field experiment with 276 plots, but also collecting data on-farms as part of the wider research engagement. Malcolm is the interface, able to skilfully liaise between farmer and scientist requirements. This was shown most recently

at the 2022 NZGA/NZSAP joint symposium in Invercargill where data he collected from Inverary station was presented. He is now featured on a series of videos produced by B+LNZ on how to collect pasture growth rate data on-farm.

The consummate professional technician

In short, Malcolm Smith has been, and is, an invaluable member of all of the research teams he has worked with over the course of his career. He learned his trade in beef and sheep management at Lincoln College and MAF and honed those skills to be the consummate professional technician.

His value is formally acknowledged on over 20 papers as a co-author and numerous acknowledgements in other papers.

Perhaps his greatest accolade, however, comes from the many postgrad students and visitors who he has supervised when they leave Lincoln. They continually comment on his patience, expertise, dedication and desire to "have a Malcolm Smith" on staff wherever they are employed throughout the world.

Malcolm Smith continues to have an outstanding career as a technician in the livestock industries as he supervises the newly minted Regenerative Agriculture Dryland Farmlet at Lincoln University.

Malcolm Smith has made an enduring and exceptional contribution to the New Zealand livestock industry. He has directly contributed to NZSAP as an author and long term member, and to the wider community, through his exceptional and longstanding research work.



Waihora Taniwha – the Lincoln High School Kī-o-Rahi team

Kī-o-Rahi, legend and traditional Māori ball sport, once played by members of the 28th Māori Battalion during World War II, is alive and well at Te Kura Tuarua o Waihora, Lincoln High School.

The Waihora Taniwha represent Lincoln High School at all the major regional Kī-o-Rahi events, as well as competing at the New Zealand Secondary Schools Kī-o-Rahi Competition. Along with their physical abilities and skills, the team gains their edge against the opposition because of the respect they have for tikanga Māori (Māori values and customs). Having been undefeated on the regional circuit in 2021–2022, it was going to be hard to maintain that record in 2023 against teams who have grown and developed themselves. So while we lost our crown as Waitaha Regional Kī-o-Rahi champions and our crown as Te Waipounamu Kī-o-Rahi champions, the Waihora Taniwha finished 13th out of 38 teams at the 2023 NZSS Kī-o-Rahi Competition. This was the highest placing out of the three teams from Te Waipounamu who participated this year.

While the competition arena is where we test ourselves and play the sport we love, being a part of the Waihora Taniwha provides students and teachers with community, purpose, connection, and wairua (spirit).

We can't wait for the 2024 Kī-o-Rahi season to begin!

– Matua Tihirangi Brightwell

HOD Te Reo Māori, Headcoach of the Waihora Taniwha



Thinking of selling? Now is a great time!

WE HAVE BUYERS WANTING THESE PROPERTIES

RayWhite



5+ bedroom, 800m² + section, dual living option preferred, in Tai Tapu /Lincoln area

4+ bedroom, 2 bathroom, 3 car garage, 1000m²+ section in West Melton

3-4 bedroom, 2 bathroom, 3 car garage, 600m²+ section in Lincoln

3 bedroom, 2 bathroom, approx 500m² section in Lincoln

Contact Fiona Today!

021 229 6009

fiona.shearing@raywhite.com

Town & Lifestyle Real Estate Ltd. Licensed (REAA 2008)

New Year... New Yew/You!

Happy New Year from Beaver Tree Service! New Year is always the time of year when we make promises to ourselves and others about how we are going to improve our lifestyle. Whether that means reducing or quitting a vice, trying to eat healthier or get more exercise, or maybe you've decided you need to be better at staying in touch with your friends and family.

We have another suggestion for your New Year's resolutions, why not resolve that this is the year you will get your outdoor space sorted!



This year is the perfect year to get planting and create the native garden you've been talking about for the last decade. Or maybe finally add that apple tree you've always wanted. Or why not resolve to really start taking care of the trees you already have! We often vow we're going to try and stay more hydrated or really focus on our diet, so let's make the same promise for our trees. Even well-established trees could use a little hydration help in the hot summer weather, and a boost of nutrients will always be welcome.

Maybe this is the year you've resolved to get your trees tidied up – definitely, something Beaver Tree Service can help you with. Did you know that Beaver Tree Service can provide biannual, annual, or biennial maintenance for your trees? We also offer day rates meaning you can book us in for a full day's work to get your trees ready for 2024.

We also offer a free, no obligation, quote in all the areas we service! Making your New Years resolutions for your trees easy as.

At Beaver Tree Service we love trees, and we want you to get the best out of the trees on your property, so this year resolve to give Beaver a call!

– Bryce Robb, Director/Head Arborist
of Beaver Tree Service,
www.beavertree.co.nz



DR FLEUR HARRIS

CHILDREN'S SPEECH & LANGUAGE THERAPIST



"I empower parents to nurture their child's learning. I am passionate about cultivating children's learning for life."

Are you wondering about your child's speech and language development? I have 43 years experience and am based right here in Lincoln. Contact me for a chat in a local café, free of charge.

Dr. Fleur Harris PhD • 027 498 8355
info@nzwordtrees.com • www.nzwordtrees.com



Lincoln Farmers' & Craft Market

Summer on the Green

10am–1pm Saturday 10th February

Baking, floral, seedlings, garden plants, crafters, cheese makers, ready to eats, produce, condiments, woodworks & much more!

On the Green beside Lincoln Library

Children's Fun – Putt for Prizes

Entertainment with The String Bandits



A Real Community Place to Shop



Every Saturday

10am–1pm

Baking, floral & bouquets, cheese makers, crafters, ready to eats, produce, seedlings, garden plants, condiments and much more!

On the Green beside Lincoln Library

A Real Community Place to Shop

Lincoln Show Sur-prize!

Did you know that Lincoln had its own A&P Show for several years?

From 1872, the Lincoln Farmers Club, later the Lincoln Farmers Club and Pastoral Association, used the Lincoln Township Fair Company grounds (now part of Lincoln Primary School land) to hold their annual Show. Despite doubts, the first Shows were an outstanding success. It seemed that the District could support events at both Leeston and Lincoln, and the aim, to let local farmers and their workers see the best stock available, was achieved. There were classes for sheep, cattle, horses, pigs, implements and local manufacture. W. Geddes & Co. won first prize for their locally brewed beer – the only entry in that class!

While the entry fee of a shilling resulted in gate takings of 22 pounds, 5 shillings and sixpence, it also encouraged large numbers of people to find another way in – through the gorse hedges. Visitors driving from Christchurch noted the fertile land, wheat crops and many new homes in the district. From the show grounds, the dominant building in the village, the 20 room Perthshire Arms hotel, stood out 'in all the glory of its first coat of paint – a brilliant red.'

The Star (1/11/1872) reported that two handsome silver cups to be presented as prizes at the Lincoln Show could be seen at Messrs Coates and Co.'s shop in Colombo Street. One, beautifully engraved with festoons of vines was given by Mr H. J. Tancred for the best pen of cross-bred wethers, any age or breed, unshorn. The second, richly ornamented in medieval style, was given by Mr. A.C. Knight for the best pen of breeding ewes. Mr Andrew won the first for his pen of 5 2-tooth wethers, 7/8 Leicester, and Mr Lawry the second, also for the Leicester breed.

In 1877 there were 278 entries across all. Show results that year record Silver Prize cups were won by W. D. Gebbie for the best 4 year old bullock, James Shaw for his Hays Breed sow, and D. Gebbie for largest prize taker in cattle and horses.

But by 1878 the number of entries had dropped and despite the early success of 'single' rail fares to encourage visitors, the railway had also given exhibitors and visitors easy access to the Ellesmere and Canterbury Shows. Attempts to merge events, or to at least coordinate dates, failed and the Lincoln Show ceased.



Imagine our surprise when asked by a visitor to the Ellesmere Show last year if we would like to display a Lincoln Show Cup from 1877! This fine, large, silver cup was awarded to James Gregg, for his Leicester sheep. He farmed on Goulds Road, Springston. While he received a commendation for his 'very useful ram' at the 1876 Lincoln Show, in 1877 he scooped the pool of first prizes with his Leicester sheep. In 1879 he won first prize and medal for his English Leicester ewe at the Christchurch Show, and is later recorded as a Judge for the breed.

First imported to New Zealand in 1843, Leicester sheep, now known as English Leicester, suited the wetter conditions of the Lincoln/Springs district where merino sheep did not do well. By 1900

they were the third most common breed in New Zealand, but are now classified as rare.

Our huge thanks to Rob Lindsay and family for sharing this treasured item which has passed down the generations from James Gregg, and prompted us to explore more of our local history. We would love to hear from anyone else who has Lincoln Show (1872-1878) memorabilia or family stories.

While the Cup will be on display at Pioneer Hall, we also discovered that it has a connection with Liffey Cottage. The Honorary Secretary and Treasurer of the Lincoln Show was William Arthur Murray, first owner and resident of the cottage.

– Adriana de Groot. E: sec.ldhs@gmail.com
Thanks to Papers Past, Neville Moar's Fitzgerald's Town, and David Hughes, in Rare Breeds NewZ.

You can read more about the 150 year history of the Ellesmere Show in 'Beyond the Show Gates: a history of the Ellesmere Agricultural and Pastoral Association 1870–2021.

SELWYN AUTO

Friendly service, and quality workmanship you can trust

FREE COURTESY CARS, PICK UPS AND DROP OFFS AVAILABLE



Located just 3 minutes from Lincoln!

VEHICLE REPAIRS & SERVICING

PARTS & ACCESSORIES

WOFS & DIAGNOSTICS

03 329 5841

office@selwynauto.com

132 Leeston Rd, Springston

WWW.SELWYNAUTO.CO.NZ

PGG Wrightson Real Estate

SITUATION VACANT

Residential & Lifestyle | Real Estate Salesperson Position Available

Are you looking to get back into the work force? Or looking for a new direction? We have an exciting opportunity for a commission based salesperson to join our team in the Lincoln office.

Contact us today to find out the benefits of working for us.

Linda Fogarty

Business Development Manager

M 027 294 4818

E Linda.fogarty@pggwrightson.co.nz

PGG Wrightson Real Estate Limited, licensed under the REAA 2008.

Happy New Year. We are well and truly back to business for the new year.

Did you know... what we have at Community Care?

Hearing Aid Batteries

We sell Hearing Aid batteries (\$5.00 per card, cash only) #312 (brown) and #13 (orange).

Brolly Sheets

We sell Brolly Sheets. They are the perfect solution for all your bed wetting needs, regardless of age. No more stripping beds in the middle of the night. Comfy and absorbent. These come in a number of colours and designs, especially for children.

Hire Equipment

We have wheelchairs, walking frames, toilet seats, shower stools, crutches. You may have family coming who need a wheelchair or shower stool, hire it from us. Saves you going all the way into Christchurch.

Produce Box

Everyone's gardens should be producing surplus vegetables and fruit. Our produce box is ready and waiting for all your surplus food/fruit.

Books & Jigsaw Puzzles

We have books and jigsaw puzzles available to borrow for a gold coin donation. If you have spare paperback books and jigsaw puzzles you are willing to donate, we would be grateful.

SAYgo – Steady As You Go

Falls prevention exercise classes improve your balance, mobility, strength, general



fitness and wellbeing. Held once a week for one hour – 1.30pm to 2.30pm on Wednesdays at our Community Centre, \$2.00 per class. No need to book, just come along.

Walking Groups

We have walking groups on a Tuesday, Wednesday and Friday. Our Tuesday and Wednesday groups have a waiting list at present, but please feel free to enquire.

Health Seminars

We host information workshops run by support groups – last year topics covered were: diabetes, retirement village advice, dementia, heart health, suicide. If you feel there are any topics you would like us to cover, please let our office know.

Senior Exercise Programme

Mondays, Thursdays and Fridays from 10.10am to 11.10am at the Recreation Centre, Lincoln University. The programme changes every three months. The group is friendly, relaxed and supportive of new members. Register at our office for a modest annual sub. One session is offered as a free trial.

Meals on Wheels

A main meal and dessert delivered five days a week. A referral is needed from a doctor, hospital or medical service who does referrals.

Nurse Maude Supplies

Every Thursday Nurse Maude supplies

of continence products for clients are delivered to our office for pick up by the client. Please check with Nurse Maude Supplies if your products can be delivered to Lincoln.

Counselling Services

We have a number of Counsellors who use our rooms for their clients. We have their business cards here in our office.

Brochures & Pamphlets

We have a number of brochures and pamphlets in our office on numerous topics for your perusal.

Room Hire

We have a number of rooms for hire in our building, please check our website for more information, or email or come in.

Appointment Drivers

We have volunteers willing to take people to medical appointments if needed.

Any inquiries, or for a chat, please call into our office and see Sally, 9am to 12pm, 12.30pm to 3pm.



Kind regards,
Community Care Lincoln

Web: www.lincolncomcare.co.nz
Facebook: fb.com/lincolncommunitycare
Email: admin@lincolncomcare.co.nz
Phone: (03) 325 2007

The Selwyn Printing Company

» GRAPHIC DESIGN » PRINTING » PROMOTIONAL MATERIAL » BUSINESS CARDS » SIGNAGE
» POSTERS & BANNERS » DOCKET BOOKS » LABELS » PERSONALISED CLOTHING » & MUCH MORE!

Email: sales@selwynprint.co.nz Lincoln: 13 Gerald Street, ph. 03 325 2052 Rolleston: 35 Illinois Drive, ph. 03 741 3049

www.selwynprint.co.nz  /selwynprint  @selwynprint



lincoln fire brigade

To our followers and supporters, a heartfelt thank you for the many messages we have received over the last couple of weeks. On 4th January, we were called to a medical event for one of our own. We go to a lot of these types of calls, but it hits harder when it's someone close to you.

Remembering Senior Firefighter Gavin Thomas Lack, whose love for this line of work started very early. He first jumped onto our radar when he became our adopted official brigade photographer, as that was one of his passions. He eventually joined us as Ops Support and in 2016 graduated as a Firefighter, working his way up to Senior Firefighter. He also gained employment with Fire and Emergency NZ and during his tenure, he joined the Risk Reduction Team, was a Fire Investigator, Logistics, USAR and was part of a project for our communications network.

His own great achievements aside, he was always genuinely excited for others reaching their goals. He was a champion for skill development, growth and learning, he always believed in us and backed us up when he got wind of something we wanted to achieve. You could always rely on Gav for some good banter too, whether on the fire ground, training or socialising. You never saw him without a smile on his face.

To his wife Kim, son Theo and all his family – thank you for sharing with us such a valuable asset in Gavin and for being his staunchest supporters. We're forever grateful that we had him by our side.

There's a fitting whakatauki that says, "Kua hinga he totara i te wao nui a Tane", "A totara has fallen in the forest of Tane."



On Friday 19th January, more than 500 shared in a celebration of Gav's life. We heard some incredible stories of the life he led and are in awe of what he achieved in his 51 years.

Gav's service spanned 12 years, 4 months and 19 days; 17 August 2011 to 04 January 2024.

Senior Firefighter Gavin Lack #802523, at ease Lacky, we'll take it from here.

– QFF Andy George



Need your rental property managed or your farm houses inspected?

Our highly trained property manager is a professional who is focused on personalised and exceptional service to our owners and tenants.

Contact us today.

Jo Sheppard | 022 566 1519
jo.ruralpm@bayleys.co.nz

WHALAN AND PARTNERS LTD, BAYLEYS, LICENSED UNDER THE REA ACT 200



RURAL PROPERTY MANAGEMENT

ruralpropertymanagement.co.nz



From left:
 'Musical Solo' by
 Therese Boustead;
 'Transience...
 A Moment in Time V' by
 Jo Byrne;
 'Fern Series – L'il Robin'
 by Tricia Hewlett.

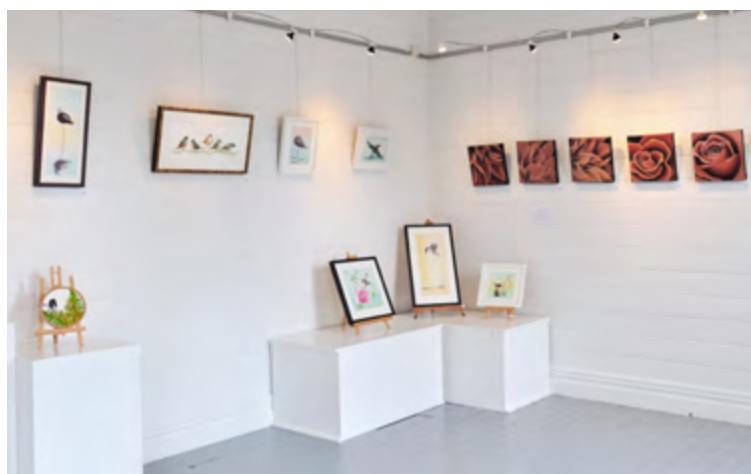
Below: 'Fresh' exhibition
 is on now at Down by
 The Liffey Gallery.

Did you know there's an art gallery in Lincoln?

Each month *Down By The Liffey Gallery* features a selection of talented local artists in an exciting exhibition.

This month's exhibition, 'Fresh', is on from 24 January – 18 February, featuring artists Jo Byrne, Therese Boustead, and Tricia Hewlett. Each of these artists freshly respond to nature's narrative, focusing on flora, fauna, and form.

Down By The Liffey Gallery, 1 James Street, Lincoln.
 Opening hours are 11.30am–2.30pm Wednesday and Thursday, 10am–4pm Friday to Sunday.



JOIN HARCOURTS LINCOLN REAL ESTATE TEAM



This could be you Tarcille Roffey Jeremy Andrews Ross Mitchell Jan Green Rachael McIntosh Julian Twiss Felicity Darling

LINCOLN MARKET *Statistics*

Source: REINZ December 2023 Statistics.



Harcourts Four Seasons Realty Lincoln Office ☎ 03 662 9933 ✉ lincoln@harcourts.co.nz

Four Seasons Realty 2017 Ltd Licensed Agent REAA 2008



Another Kim Hill HOT TOPIC discussion coming in March

Lincoln Envirotown in conjunction with Lincoln University are happy to announce that the annual popular "Hot Topic" discussion will take place on Thursday, March 28th in the Stewart Building of Lincoln University from 6.30pm.

As per tradition, the well-known Radio personality Kim Hill will lead a panel of experts who will discuss this year's topic "PLASTIC – how do we live with it". Once the panel have deliberated their varying views, the audience will be invited to question panel members.

Issues relating to the problems associated with our overuse of plastic have been prevalent for many years and its disastrous impacts on ocean life are well catalogued. The panellists will discuss all issues relating to how essential plastic might be, our ability to reduce consumption, and our means of recycling the plastic we use.

The evening is always a well-attended stimulating and enjoyable occasion; all are welcome.

More details and an invitation to register can be found by visiting Humanitix – 'Kim Hill Hot Topic 2024', or by visiting Lincoln Envirotown's website or Facebook Page.

Selwyn Timebank
 'Share, Learn, Connect'

To find out more contact
selwyntimebank@gmail.com facebook.com/selwyn.timebank



Selwyn Timebank

Timebanking is a wonderful opportunity for people of all ages and stages of life to come together and share time and resources. Members have recently received help with placing advertisements on Trade Me, repairing a bicycle, weeding, window cleaning, de-cluttering, creating a CV, baking, saving electronic files, transport to the airport, and fixing gardening tools – the list is endless and limitless!

For more information on the great benefits of timebanking email selwyntimebank@gmail.com

– Fiona, Selwyn Timebank Coordinator.

Kim Hill Hot Topic

PLASTIC

How Do We Live With It?

Panellists

Rob Wilson
Operations Manager,
EcoCentral

Rachel Barker
CEO, Plastics New Zealand

Prof. Ian Shaw
University of Canterbury

Prof. Gavin Lear
University of Auckland

March 28, 2024

Lincoln University Stewart Hall
Lecture Theatre One

Doors Open: 6:30pm
Event Starts: 7:30pm

Refreshments & nibbles provided
Cash Bar
Koha \$5.00

<https://events.humanitix.com/living-with-plastic>

Selwyn

Trap Library

Free trap hire and advice.

Lincoln Farmers & Craft Market

SATURDAY

24 FEBRUARY

10 AM - 12 PM

Open on the last Saturday of every month at the Lincoln Farmers & Craft Market.

selwyntraplibrary@gmail.com
www.facebook.com/groups/pflincoln
lincolnenvirotown.org.nz



lincoln envirotown community gardens

Although the summer has been dry, our irrigation systems have been working to maintain soil moisture. This has resulted in good production so far, especially peas, lettuces and strawberries. Mulch around the base of our fruit trees is also helpful (we have used fleece wool, kindly donated to us). We were looking forward to our largest ever crop of plums, but the birds have ravaged the fruit, despite wrapping the tree in netting.

We are experimenting with no-dig (or "lasagne") gardening and have established a small plot where a dying apple tree had been removed. We started by making a base with cardboard and newspaper to suppress weed growth, then forming successive layers of soil, compost and hay. In fact, any materials suitable for composting may be incorporated in a no-dig garden structure. As a start we are growing various types of wild flowers, but next season we will try growing vegetables.



No-dig gardening could be the solution to the problem of growing vegetables in the hard, barren soil which is typical of our newer subdivisions. Here is a link to an informative article from NZ Gardener: www.stuff.co.nz/life-style/homed/garden/129644894/a-year-of-nodig-growing-food-without-digging-into-your-garden

Our no-dig plot needs a border to retain the soil. If anyone has some spare timber, say 8" x 1" or used boxing, to donate to us, I am keen to hear from you. The total length required is around 8 metres (1 layer) or 16 metres (2 layers).

The first workshop for the year is on Saturday 13th April at 10.30am at the Lincoln Library. The topic "Fungi in your garden – friends and foes" will be presented by Wendy Kentjens, a tutor at Lincoln University.

For those who missed Errol's recent presentation "Easy Composting" at Lincoln Library, he will be repeating this at the Rolleston Library/Te Ara Ātea on 17th February at 11am. Bookings are required.

– Ruth Wood, Coordinator, Lincoln Envirotown Community Gardens

The Lincoln Envirotown Community Gardens are located on James Street, behind the Maternity Hospital. The coordinator, Ruth Wood, invites visitors to come along and inspect the gardens, especially on Monday and Thursday afternoons, or by arrangement.

For information on the Lincoln Envirotown Community Gardens contact the coordinator Ruth Wood.

Email: ruth.wood@xtra.co.nz Phone: 021 074 3905.



Working Bees
Sunday 4th February, 2 PM - 4 PM
Sunday 3rd March, 2 PM - 4 PM
Sunday 7th April, 2 PM - 4 PM

Working Bees are generally held on the first Sunday of every month.
mahoereserve@gmail.com



Fungi in Your Garden

- friends and foes

A Lincoln Community Gardens presentation on Saturday 13th April from 10.30 -11.30 at the Lincoln Library

Some fungi will help your plants to get nutrients and protect them from diseases, while others will make your plants sick. You will find out about promoting the good fungi, and keeping the bad ones in check. You will also learn about the lifecycles of fungi so you know what to look out for to grow healthy plants.



Our presenter, **Wendy Kentjens** is a Tutor in Plant Pathology at Lincoln University. As well as teaching, Wendy is researching plant diseases and beneficial organisms that can be used for disease control.

For more information:
Contact Ruth Wood (Phone: 021 074 3905, Email: ruth.wood@xtra.co.nz)

Exhibition: 'Fresh'

Therese Boustead + Jo Bryne + Tricia Hewlett

On now until 18 February

Therese, Joanne, and Tricia each freshly respond to nature's narrative, focusing on flora, fauna, and form. At Down by the Liffey Gallery, 1 James Street, Lincoln. Open Wednesday to Thursday 11.30am to 2.30pm, Friday to Sunday 10am to 4pm. Phone (03) 325 2877.

Springston Garden Club (Day)

Springston Garden Club meets on the first Thursday of the month, 1.30pm at the Lincoln Events Centre. We have a variety of interesting speakers, raffles, sales table, and garden tours with like-minded gardening enthusiasts.

If you are an experienced gardener, novice or just curious to know more please contact Sue Warman, (Secretary) on 027 303 2706 or springstongardenclub@gmail.com. New members welcome.

Lincoln Spinning & Knitting Group

Spinners, knitters and all fibre crafters – come along and join our friendly group which meets on the 1st and 3rd Thursdays of the month at Te Whare Manaaki/The Welcome Place, James Street, Lincoln, from 10.15 to 2pm. BYO lunch, tea/coffee provided, small fee. Interested? Phone Adriana on (03) 325 3320.

Lincoln Scottish Country Dance Club

The Lincoln Scottish Country Dance Club meets in the Lincoln Events Centre, Meijer Drive, from 7.30pm on Tuesdays. Looking for fun, friendship and fitness? Then come along for a look as the first night is free. New members are most welcome as full tuition is given and a partner is not essential. For any further information, contact Sue phone 347 8234 or Coreen ph 344 2057.

Lincoln Bridge Club Free Beginners Lessons

Tuesday evenings 7.30–9.30pm. Lincoln Event Centre
Contact Stuart on 325 3222.

Lincoln Bridge Club is a friendly, social club playing Duplicate Bridge. The club meets on Monday afternoons at the Event Centre from 1.30–4.30pm and on Thursday evenings from 7.15–10.30pm.



Selwyn SeniorNet in Rolleston

Selwyn SeniorNet meets at the Rolleston Community Centre each Friday 10am to 12pm. Friendly, knowledgeable tutors can help you with all your computer needs. All welcome. \$10 per term. For more info contact John on (03) 325 2515 or 027 547 4793.

St Patrick's Craft and Friendship Group

Join a small, friendly group of people, who either bring along a current craft project or come just for friendship and afternoon tea. Current group members include knitters, embroiderers and sewers so they can teach others or help with any problems. Everyone is welcome to come along. The group meet in St Patrick's Parish Centre, which is joined to St Patrick's Catholic Church at 31 Gerald Street, from 1.30pm to 3.30pm every Tuesday. For more information contact Yvonne on (03) 366 9795 or 027 334 1151.

Ellesmere Badminton Club



Friendly Social Badminton

Everyone welcome

Beginners to experienced players



Tuesdays 7.30–9pm, Lincoln Event Centre

\$5 per person/night

For more info contact Katinka on 027 32 52 044



GRANT APPLICATIONS

The Lincoln Community Trust has funds invested for the benefit of the community of Lincoln. Grant applicants should be Community organisations who must reside, ideally pay rates, or operate within the Lincoln Community rating area. Such funds may be distributed twice a year. Applications for such grants may be made at any time but must be in the hands of the Trust by the 31st of March or the 30th of September each year.

Application forms are available from Lincoln Community Care, 16 Lyttelton St, Lincoln or via email from admin@lincolncomcare.co.nz

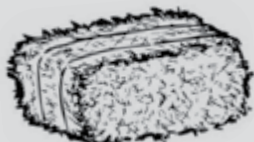


ELLESMERE LIONS PEA STRAW TAKING ORDERS FOR 2024

PEA STRAW AVAILABLE NOW

Help the Lions continue with their current fundraising projects. Small bales \$8 and medium bales at \$70. Price includes delivery in Lincoln and Selwyn District.

Contact: Richard Boyce, phone 027 7141 324 or 325 2279
or Alex Hayward, phone 324 4094. Email lionspeastraw02@gmail.com
with name, address, telephone number and amount required.





The catering team hard at work, and the delicious meals ready for serving.



Helen, Lynne and Barbara wrapping gifts at Northlands Mall.

Selwyn Lions continuing volunteer efforts through Christmas and into 2024



The best is yet to come in 2024! Here's wishing you all a year bringing new happiness, new goals and new achievements.

Reflecting back, December 2023 capped off a successful year for our team. Firstly we catered for the Lincoln Senior Citizen's Christmas lunch. Overseen by our Catering Coordinator Helen Allison, the guests enjoyed a delicious festive meal and a lovely array of raffle prizes donated by our members.

Three teams of our ladies helped wrap Christmas gifts at Northlands Mall on 14th to raise funds for the new Canterbury Cancer Centre. It was a pleasure to be a part of such a worthy cause.

What fun we had decorating our tree for the Rolleston Hope Church Christmas Grotto! Our entry was constructed of all natural materials and featured 'Cuddle Hearts'. These are made by our members throughout the year and donated to the Christchurch NICU to enable new Mothers and their babies to bond while physically separated. The heart is placed inside the Mothers' bra to absorb her unique scent, and then placed under the baby's head in the incubator.

Delivering festive treats to residents at Woodcote rest home in Hornby is always a highlight of the month. It is so rewarding to spread some pre-Christmas cheer and to see their smiles of gratitude.

Finally we had our own special Christmas social meeting. Long-standing members were presented with 35 and 30 year awards for their long service to our club, quite an achievement. There were lots of laughs as we were exchanging/swapping/stealing Secret Santa gifts, as well as an entertaining teams quiz.

2024 promises to be an exciting and fun year for our members continuing our volunteer efforts to raise funds for our community.

Selwyn Lions Club has a lot to offer. If you have an event or a celebration requiring caterers, give our President Jane a call on 027 631 9450 to see if we can help. If you are interested in joining our Club, also contact Jane. She will offer you the opportunity to visit our group at a social dinner meeting to see if volunteering with us is right for you.



Helen A., Helen W. and Lois.



Helen W. giving a unit resident her goodies.



Long service achievements – Helen W., Val, Barbara W. and Beth.



What is it? Non-competitive running & walking group
Who is it for? Everyone!
 All ages, All speeds
How far? 3km or 6km
When? Every Tuesday at 5:45pm
Where? Te Whariki Playground
How much? Gold coin

A group encouraging a community to exercise together

@RoadRunnersLincoln



AFTER SCHOOL PROGRAMME
 For ages: 5 to 12

Thursdays
3:15-4:30pm

• Afternoon Tea • Music
 • Games • Crafts • Bible Stories

children@lincolnchurch.org.nz
 or phone Clau 027 389 8516

www.lincolnchurch.org.nz
 www.facebook.com/lincolnunion



useful contacts

Art Group of Lincoln Faye 347 3399
 Community Garden 021 074 3905
 Death Café Lincoln 020 425 0369
 Down by the Liffey Gallery 325 2877
 Ellesmere Badminton Club
 027 325 2044
 Ellesmere Indoor Bowls 325 3143
 Ellesmere Probuss Club 325 3087
 Junior Enviro Action Group
 027 307 0767
 Liffey Toastmasters 027 955 7996
 Lincoln Badminton Club 347 9707
 Lincoln Bowling Club 325 2289
 Lincoln Bridge Club 349 9817
 Lincoln Business Assn 325 2039
 Lincoln Community Care 325 2007
 Lincoln Community Committee
 021 171 1054
 Lincoln Cricket Club 029 240 0093
 Lincoln & Districts Historical Soc.
 325 3320
 Lincoln Envirotown 329 5858
 Lincoln Farmers Market 329 5757
 Lincoln Girl Guides 027 462 8871
 Lincoln Golf Club 325 2453
 Lincoln ICONZ 347 8722
 Lincoln Indoor Bowls 347 3212
 Lincoln Masonic Lodge 349 9905
 Lincoln Men's Shed 260 1348
 Lincoln Netball Club
 lincolnnetballsecretary@gmail.com
 Lincoln Outdoor Bowls 325 2289
 Lincoln Patchwork and Quilting
 021 129 2833
 Lincoln Plunket 325 2179
 Lincoln Rugby Club 027 303 1879

Lincoln Scouts 021 258 5680 (text)
 Lincoln Table Tennis Club 325 7694
 Lincoln Tennis Club 325 3177
 Lincoln Women's Institute 741 1549
 Mother4Mother 357 4970
 Rotary Club of Lincoln 325 2132
 Selwyn Lions 325 7957
 Selwyn Parenting Network
 021 166 8603
 Senior Citizens Club 027 712 7195
 SeniorNet 027 547 4793
 Spinning/Knitting Group 325 3320
 Springs Day Club 329 5634
 Springston Evening Garden Club
 344 5781
 Springston Garden Club (daytime)
 325 5002
 Tai Tapu Garden Club 329 6268
 Time Banking 423 0456
 Toy Library 021 044 2407
 U3A Ellesmere 741 1855
 Community Dental 0800 846 983
 Healthline 0800 611 116
 Lincoln Comm. Response 325 7732
 Lincoln Library 347 2876
 Lincoln Maternity Hospital 325 2802
 Lincoln Police 378 0160
 Lincoln Fire Station 325 2801
 Nurse Maude 375 4200
 Selwyn Community Watch 660 0320
 info@selwyncommunitypatrol.org.nz

The information included in this news-
 letter is provided as a service to our
 community. The Selwyn Printing Company
 is not responsible for the accuracy of
 information. Any updates or alterations,
 please contact LCN@selwynprint.co.nz

BUSINESS FOR SALE

NEW YEAR & A NEW START!

Your choice of part time/full time

Locally owned & operated shuttle
 servicing Airport/Events/Schools

Diverse income in Selwyn District

PSL licence will be required

Back-up/relief drivers available

60% +10 years repeat business clientele

Branded website 100% strike rate

Fantastic business potential in Selwyn

Owner retiring

Expressions of interest to
 thomas.ray@xtra.co.nz

A#1SHUTTLE4U?

www.a1shuttle.co.nz



Lincoln Motel

21 luxury motel units in the heart of Lincoln

Studio & 1 Bedroom Units | 2 Bedroom Units
 Spa Bath Units | Access Units

4-6 Maurice Street, Lincoln

Reservations 0800 001 689 | Ph. (03) 974 1620

www.lincolnmotel.co.nz

Tai Tapu Garden Club

Our garden club meets every 3rd Monday at 1pm
 at Tai Tapu Community Centre.

Flower competitions each month, raffles and afternoon tea,
 with a variety of garden visits and speakers.

Please contact Lynne Parker (Secretary) on 027 505 9573.

NEW MEMBERS WELCOME

EVERY SATURDAY: Lincoln Farmers' & Craft Market – On the green beside Lincoln Library. 10am–1pm

February 2024

SATURDAY 3 FEBRUARY

Kite Day

Foster Park, Rolleston, 11am–3pm

SUNDAY 4 FEBRUARY

BMX Coaching

Prebbleton Domain Pump Track, 12–2pm. Free, bookings required: events.humanitix.com/bmx-coaching

Open Day Liffey Cottage

James Street, Lincoln 2–4pm

Open Day Pioneer Hall

Cnr Gerald Street & Kildare Terrace, Lincoln, 2–4pm

Mahoe Reserve Working Bee

2pm–4pm

Sunday Music Session at The Laboratory

3–5pm, feat. Bradley & Chloe

SATURDAY 10 FEBRUARY

Lincoln Farmers' & Craft Market presents Summer on the Green

Market, entertainment, putt for prizes, and children's fun! 10am–1pm, on the Green beside Lincoln Library

SUNDAY 11 FEBRUARY

Sunday Music Session at The Laboratory

3–5pm, feat. Sarah Newman

FRIDAY 16 FEBRUARY

Walking into History: Lincoln

Liffey Cottage, James Street, Lincoln, 10am–2pm

SATURDAY 17 FEBRUARY

Pickleball 'Have a Go'

Lincoln Event Centre, 10am–12pm, \$3, book via events.humanitix.com/pickleball-have-a-go-lincoln

SUNDAY 18 FEBRUARY

Sunday Music Session at The Laboratory

3–5pm, feat. Anna & Damo

SATURDAY 24 FEBRUARY

Selwyn Trap Library

Free trap hire and advice at the Lincoln Farmers' Market

SUNDAY 25 FEBRUARY

Sunday Music Session at The Laboratory

3–5pm, Performer TBC

March 2024

SATURDAY 2 MARCH

Selwyn Sounds

Feat. The Human League, Go West, Nik Kershaw, The Mockers, Choirboys at Lincoln Domain selwynsounds.co.nz

SUNDAY 3 MARCH

Mahoe Reserve Working Bee

2pm–4pm

Pets & Family Day at The Laboratory

TUESDAY 19 MARCH

Food Lovers Masterclass

Lincoln Event Centre, 6–8pm, \$10pp, wastedkate.co.nz

THURSDAY 28 MARCH

Kim Hill Hot Topic: Plastic

Lincoln University events.humanitix.com/living-with-plastic

April 2024




SATURDAY 13 APRIL

Workshop: Fungi in your Garden

Lincoln Library, 10.30–11.30am

Help keep water flowing for everyone.



-  Don't water
-  Check weather conditions (avoid watering on hot days – overcast is best)
-  Water wisely

For smart watering tips visit: selwyn.govt.nz/watersense





Lincoln group

All welcome!

Termtime Wednesday mornings from 9.15am

Te Whare Manaaki, 20 James Street, Lincoln

\$4 per family per session

- Friendly, welcoming and caring environment
- Meet other local mums, dads and caregivers
- Suitable for 0 to 5 years
- Fun songs, rhymes and actions which help your child's development
- We provide instruments and props
- We provide morning tea, and toys for the children to play with before and after the music session



lincolnmainlymusic@gmail.com

faith in your community



ST. PATRICK'S CATHOLIC CHURCH

31 Gerald Street, Lincoln

Saturday Vigil: 5.30pm

Sunday Mass: 8.30am

Weekday Mass: Tuesday to Friday 9am

Parish Priests

Fr Brian Fennessy, M: 027 675 8456

Fr Chris Orr, M: 027 659 1962

Selwyn Parish Leadership Team Chair
Tricia Smith Ph: 325 2234

selwyncatholicparish@gmail.com



LIFE CHURCH SELWYN

10am Sundays at Lincoln
Event Centre (Meijer Drive).

All welcome – an intergenerational
and multicultural church.

Life Kids programme available
during service.

Campus Pastors: David & Jo Bennetts

Life Church Office:
16 Gerald Street, Lincoln

www.lifechurch.nz
selwyn@lifechurch.nz



LINCOLN BAPTIST CHURCH

109 Carnaveron Drive, Lincoln

10am Sunday Service
All welcome.

An intergenerational and
multicultural church

Youth and children's programme
available during service.

Life/home groups;
Youth Groups

Phone: 325 3396

Email: admin@thelink.nz
www.thelink.nz



SPRINGS COMMUNITY CHURCH

Sundays 11am at Ararira Springs
Primary School, Russ Drive,
including a shared lunch.

Thursday evening Bible study.

A brand new church for those
who are new to church.

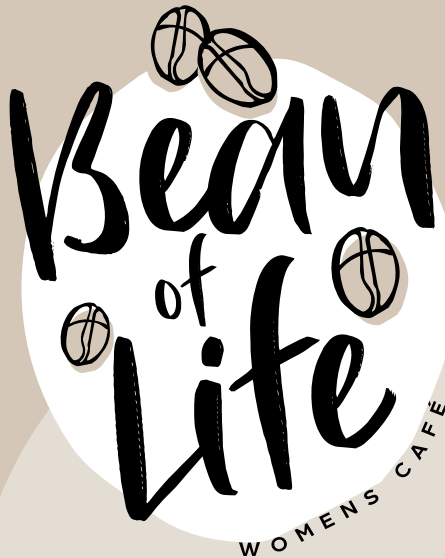
We're a small, friendly group
who believes that Jesus
makes all the difference.

kiaora@springscommunitychurch.nz
www.springscommunitychurch.nz
fb.com/springscommunitychurch

Do you want to get to know people.
Maybe new to Lincoln.

Just want a place to have a coffee & chat.

We have the place for you.



Great coffee & baking - No charge

Open every Tuesday morning,
9.30am-11.30am during school term time

Where: Lincoln Union Church in
Te Whare Manaaki, 20 James Street

Preschoolers welcome
Hope to see you there



Church Ph: 03 325 2257



LINCOLN UNION CHURCH

20 James Street, Lincoln

Sunday Service 10am
Together with God

Sunday School
10am during term time

Mainly Music 9:15am Wednesdays
during term time

All welcome.

For more information contact:
Minister: Rev. Phyll Harris
Ph: 325 2257
www.lincolnchurch.org.nz



LINCOLN CHINESE CHURCH

20 James Street, Lincoln

Sunday Service 2pm

Youth Group:
Every Friday 6pm-9pm
(Free meal, Bible study,
Group sharing)

All welcome.

Pastor: Charles Yu

Tel: 325 3238
Mobile: 027 615 9796
Email: yuf228@hotmail.com



LINCOLN ANGLICAN PARISH

Incorporating St Stephen's, Lincoln;
St Mary's, Springston; St Mark's,
Greenpark and St Paul's, Tai Tapu.

St Stephen's and St Paul's have a
weekly service at 10am Sundays.
The others meet at 9 or 9.30am,
2-3 times a month.

Contact for more details:
Polly Warren, People's Warden
Ph: 321 7370. Mob: 027 8787 643
Rev. Mark Barlow
lincolnanglican.org



ALL NATIONS BAPTIST CHURCH

Join us – Everyone is welcome.

In our church you will find
• Traditional Hymns • KJV Bible
• Great Fellowship
• International Community

Every Sunday at 4pm
Lincoln Community Care
16 Lyttelton Street, Lincoln.

Pastor Paul Anger
Ph: 021 033 7274
Email: paul.anger@hotmail.com

WHAT'S *new*

AT 8 VERNON DRIVE, LINCOLN



Zest 4 Travel – Now at 8 Vernon Drive
Phone: 0800 937 841 zest4travel.co.nz
Meetings by appointment

MEXICALI

Unit 1, 8 Vernon Drive
www.mexicalifresh.co.nz

**NEW MENU
AVAILABLE
NOW!**

BURGER

WISCONSIN

Unit 1, 8 Vernon Drive

ORDER ONLINE: www.burgerwisconsin.co.nz



Large selection of PYO (Pick Your Own) and Pre-Packed Sushi.
Hot and Yummy Donburi Bowl, Bento, Japanese Curry, Dumplings,
Seafood, Crispy Squid and many more options to choose from.

Unit 2,
8 Vernon Drive
03 321 7900
@Sushiyalincoln



Nom Nom Kitchen

SOUTH EAST ASIAN CUISINE

Open Tues–Sunday Lunch 12–2pm, Dinner 5–9pm, Closed Monday
Unit 4, 8 Vernon Drive | www.nomnom.lincoln@gmail.com



Mughlai Indian Cuisine

Call in today to reserve your table or
order online.
www.mughalkitchen.co.nz
Ph 03 421 4555 | Unit 6, 8 Vernon Drive

mike Pero
REAL ESTATE

**When selling with us you
can be confident that you
will receive the level of
service you deserve.**

Unit 3, 8 Vernon Drive | 0800 EAGARS | lincoln.mikepero.com

NEOVIA
ADVISORY

**Leading a new era
in financial services**

Unit 14, 8 Vernon Drive | Ph 03 325 2409 | www.neovia.co.nz

LINCOLN BARBERS

Unit 8,
8 Vernon Drive
Ph 03 420 0358



LINCOLN LAUNDROMAT

Now Open 24/7
Unit 9,
8 Vernon Drive

TECH EXPERT
PHONE & COMPUTER REPAIRS
Phone 020 4089 3123
Open Mon–Fri 9am–6pm & Sat 10am–4pm
techexpertsouth.com



**Stylish + curated
pre-loved clothing**

Unit 11, 8 Vernon Drive | Ph: 022 211 1005
www.reinvent.co.nz

UNIT TO LEASE

79m² – Suit beauty/hair service or similar
CALL MIKE – 027 570 7674

OFFICE SPACE TO LEASE

120m² – Available now!
CALL MIKE – 027 570 7674

SO MUCH MORE ON OFFER AT 8 VERNON DRIVE, LINCOLN!